



## AIPPEN Newsletter, 2024

### Steering Committee Members

AIPPEN is led by a steering committee with representation across Australia and New Zealand (see membership list below). I am the current chair after taking over from Fiona Kent at the start of this year.

Margo Brewer	Curtin University (chair)
Belinda Swyny	University of Queensland
Brenda Flood	Auckland University of Technology
Dale Sheehan	Otago University
Cathy (Caterina) Tannous	Western Sydney University
Fiona Kent	Monash University
Heidi Waldron	Curtin University
Jacqueline Bloomfield	University of Sydney
Jacqui Verdon	Northeast Health Wangaratta
Kerry Hood	Federation University
Krista Reed	Charles Sturt University
Lyn Gum	Flinders University
Marion Jones	Auckland University of Technology
Megan Anakin	Otago University
Monica Moran	University of Western Australia
Neil Cottrell	University of Queensland
Philippa Friary	University of Auckland
Priya Martin	University of Queensland
Gary Rogers	Deakin University
Jill Thistlethwaite	University of Technology, Sydney
Sherryn Evans	Deakin University
Sarah Meiklejohn	Monash University

Towards the end of the year, Megan Anakin resigned from Otago to take up a new role in Australia. Fiona Kent resigned from Monash to take up a new role in Ireland. Both Megan and Fiona stepped down from the committee at the end of this year. Nalini Pather, from the University of Queensland, joined us in her role as the new Interprofessional Education (IPE) Lead for ANZAHPE (<https://www.anzahpe.org/>). Committee meetings were held in January, April, June (at the ANZAHPE conference), August and November in 2024.

## AIPPEN's Key Achievements in 2024

### Paper on the next 50 years of IPE

Following a successful expression of interest, several members of the committee—Margo Brewer, Sherryn Evans, Lyn Gum, Fiona Kent & Megan Anakin—had a paper titled *Interprofessional Education for the next 50 Years* accepted for publication in ANZAHPE's **Focus on Health Professional Education** journal as part of their 50th year anniversary series. We expect the paper to appear in a 2024 edition of the journal.

### Networking events

Several successful online interprofessional networking events were held this year under the leadership of Megan Anakin and Heidi Waldron. These events encouraged conversations among people interested in interprofessional education in Australia and New Zealand with an aim to support the formation of new collaborations and exchange ideas about practice and scholarship. Three of this year's events were led by AIPPEN steering committee members:

- *Designing a faculty-wide IPE programme in the post-COVID world* led by Gary Rogers
- *Is the presence and visibility of collaborative practice a significant positive contributor to the "culture" of a placement and therefore the learning environment?* led by Dale Sheehan
- *Propelling Rural IPE research* led by Priya Martin.

A fourth event '*Perspective taking*' and '*engaging in dialogue*': Health humanities approaches that are applicable for designing and facilitating interprofessional learning was led by guest presenter Professor Sandra Carr from the University of Western Australia. Recording of these networking events are available on the ANZAHPE website at <https://www.anzahpe.org/page-1075497>

On behalf of AIPPEN I wish to thank Megan Anakin and Heidi Waldron (steering committee members), and Jill Romeo and Kendall Marriott (from the ANZAHPE office) for their leadership of these networking events. Heidi will be working with Nalini Panther (ANZAHPE's new IPE Lead) in planning the events for 2024. The first event is scheduled for **12-1pm AET on March 6**. The remaining events are likely to be on May 8, August 7, and October 2. The focus of each event continues to be a 5-10 minute presentation followed by group discussion in response to 1 or 2 trigger questions. I encourage all AIPPEN members to engage in these networking opportunities in 2024.

### Professional development

We ran a webinar in May, in partnership with ANZAHPE, titled *Assessment of student learning outcomes in interprofessional education: What does the evidence tell us?* led by me and facilitated by several members of the steering committee. You can access the recording of this webinar if you are an ANZAHPE member at <https://www.anzahpe.org/ANZAHPE-Online-Past-Events> Another webinar is planned for **1pm-2pm (AET) on May 16, 2024** which will focus on the research generated by the HPAC Forum (see National Interprofessional Competency Framework on page 3).

If you are interested in learning about recent IPE and interprofessional collaborative practice (IPCP) developments in Australia, I encourage you to watch Fiona Kent's Global Café from earlier this year <https://interprofessional.global/ipecpinaustralia-2023/>

Interprofessional education was a prominent theme at this year's **ANZAHPE 2023 conference** with presentations on each day of the conference, including from several steering committee members. Next year's conference in **Adelaide from July 1-4** will also feature IPE as a major theme. AIPPEN members are encouraged to submit their initiatives for presentation or attend in person to hear from colleagues and join

our in-person meeting during the lunch break on one of the conference days (details TBC). For more information visit the conference website <https://eventstudio.eventsair.com/anzahpe-2024/>.

At the **Ottawa 2024 conference** in Melbourne in February next year I am leading a symposium titled *Assessment of interprofessional education outcomes: What have we achieved and where might we head next?* The symposium panel includes steering committee member Gary Rogers, ANZAHPE's IPE Lead Nalini Pather, and Sharon Brown from Wintec, New Zealand <https://www.wintec.ac.nz/>. Following the symposium, Nalini, myself and ANZAHPE President (Jo Bishop) are running a workshop titled *Integrating interprofessional education (IPE) and assessment strategies in health professional education*. I hope some of you will be able to join us at the conference and participate in these two events. For more information on conference visit their website <https://ottawa2024.au/>

### Regional resource repository

We continued to promote our IPE resource repository, which is managed by ANZAHPE and hosted by Nexus, the centre for IPE and IPCP in the US (<https://nexusipe.org/informing/resource-center/anzahpe>). The repository currently contains 46 journal articles and book chapters, 20 tools, two reports and one curriculum. If you are interested in submitting a resource, please complete the **submission document** at the end of this document and email to [executive@anzahpe.org](mailto:executive@anzahpe.org). At least two professions must be represented in the resource, and it must be designed for the Australian and/or New Zealand context.

## National Initiatives

### AHPRA's Public Consultation Report on the IPCP Statement of Intent

Steering committee members provided feedback to the first draft of Australian Health Practitioner Regulation Agency's (AHPRA) *Proposed IPCP Statement of Intent* as part of the public consultation process in June this year. AHPRA then revised their statement and invited AIPPEN to endorse this in early December. Committee members raised concerns about the inconsistent use of terminology in the latest iteration of the document (interprofessional education, interprofessional learning, interdisciplinary learning; interprofessional collaborative practice and interprofessional care), and the continued focus on racism. After sharing these concerns to AHPRA, AIPPEN joined several other organisations in endorsing the statement.

### National Interprofessional Competency Framework

Two committee members, Fiona Kent and Sarah Meiklejohn, have been involved in a large program of work undertaken by the HPAC Forum (<http://hpacf.org.au/about/>). This research explored the perspectives of education providers, consumers, and health service providers. Each perspective has been submitted as a separate manuscript to: Health and Social Care in the Community, Journal of Interprofessional Care, and Australian Health Review. Members of the AIPPEN Steering Committee will now explore the potential to lead the development of a national IPCP competency framework which aligns with AHPRA's IPCP Statement of Intent.

## International Initiatives

### Interprofessional.Global

Interprofessional.Global is the international confederation for IPE and IPCP. The federation's functions include facilitating knowledge sharing and the selection of the host of the **All Together Better Health** (ATBH) conference. The confederation has several member networks and working groups. For more information see <https://interprofessional.global/about/confederation/>.

Steering committee member Jill Thistlethwaite attended the [Interprofessional.Global Partnership Symposium](#) at the recent All Together Better Health (ATBH) conference in Qatar on behalf of AIPPEN. Most global networks were also in attendance. Each network and working group presented a poster, which demonstrated a lot of progress had been made in IPE/IPCP across the globe in recent years. You can see our poster attached and at the AIPPEN link on the Interprofessional.Global website <https://interprofessional.global/australasia/>. The Winterthur-Doha Interprofessional Declaration was signed at this event. You can see this declaration, and the original Sydney declaration in building on from, at <https://interprofessional.global/winterthur-declaration/>.

The call for Global Cafés in 2024 was recently announced. Cafés support the exchange of knowledge and experiences in the global IPE/IPCP community. They are presented as live webinars, which are recorded and posted on the Interprofessional.Global website. If you have IPE or IPCP experience, innovation, study, etc. you want to share with a global audience submit your application to <https://interprofessional.global/global-cafes/global-cafe-join/#presentcafe>.

If you have not already seen the global situational analysis of IPE published in 2022 by Interprofessional.Global you may find this interesting reading: <https://interprofessionalresearch.global/wp-content/uploads/2022/10/Global-IPE-Situational-Analysis-Final-Report-October-2022-1.pdf>

#### **All Together Better Health (ATBH) Qatar**

The biannual IPE conference, previously postponed due to the global pandemic, was held in Qatar in November this year (<https://atbh.org/>). The conference was a success with over 400 attendees. Highlights included a presentation from the World Health Organization, student debate, Health Care Team Challenge, and a presentation by a patient. The [2025 conference](#) will be held in Columbia, which currently has a travel warning.

#### **Thank you!**

On behalf of the AIPPEN Steering Committee thank you for your ongoing interest in IPE and/or IPCP. To assist with planning how we can support you, the members of our community of practice/network, in the future we will be sending out a survey early in the year. We hope you will avail yourself of this opportunity to let us know what you want from your membership of AIPPEN. In the meantime, please share this newsletter with your colleagues and encourage them to join AIPPEN by emailing me ([m.brewer@curtin.edu.au](mailto:m.brewer@curtin.edu.au)).

All the best for a safe and prosperous 2024.

Associate Professor Margo Brewer

AIPPEN Chair

December 5, 2023



## BIENNIAL REPORT

## Australasian Interprofessional Practice &amp; Education Network

Jill Thistlethwaite<sup>1</sup>, Marion Jones<sup>2</sup>, Fiona Kent<sup>3</sup>, Margo Brewer<sup>4</sup><sup>1</sup>University of Technology Sydney, Australia <sup>2</sup>Auckland University of Technology, New Zealand, <sup>3</sup>Monash University, Australia, <sup>4</sup>Curtin University, Australia2-5 Nov 2023  
Doha, Qatar

## BACKGROUND

AIPPEN was established in 2006 in response to a call from staff and students for an Australasian interprofessional practice and education hub. In 2019 the AIPPEN network was reframed as a community of practice for individuals, groups, institutions and organisations across Australia and New Zealand who are committed to researching, delivering, promoting, supporting and researching interprofessional learning, through interprofessional education and practice.

AIPPEN has an agreement with ANZAHPE (Australia & New Zealand Association for Health Professional Educators) supporting IPE and collaborative practice in partnership.



## PURPOSE

- Establish a community of practice for IPE and practice, research and evaluation, where best practice is shared
- Share interprofessional resources and contribute to the national repository through partnership with ANZAHPE
- Take charge of interprofessional activities in ANZAHPE to link colleagues nationally
- Link with international colleagues working in interprofessional education and practice, research and evaluation

## LEADERSHIP &amp; MEMBERSHIP

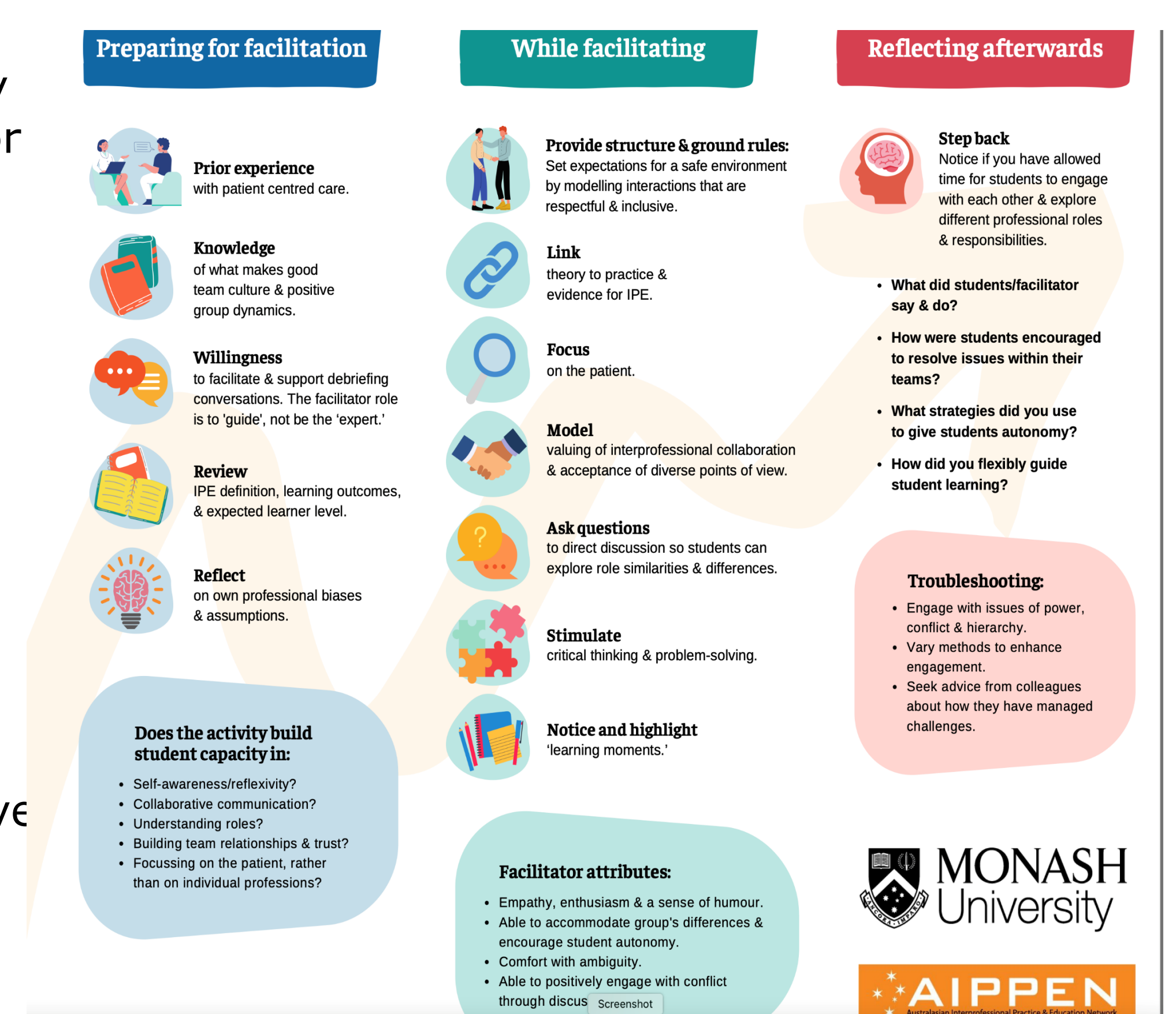
AIPPEN Chair:  
[M.Brewer@curtin.edu.au](mailto:M.Brewer@curtin.edu.au)

Interprofessional Global representatives:  
[Marion.jones@aut.ac.nz](mailto:Marion.jones@aut.ac.nz)  
[Fiona.kent@monash.edu](mailto:Fiona.kent@monash.edu)

Membership is free and includes clinical and academic interprofessional leaders from health professions working in Australia, New Zealand and the Pacific

## ACCOMPLISHMENTS

1. Vision: Revision and update of AIPPEN objectives 2020
2. Virtual steering committee meetings 3-monthly
3. Communications: Establishment of email list for communication with broader interprofessional community in Australian and New Zealand
4. Resources: Gathered, screened and loaded interprofessional resources to NEXUS website
5. Resources: Literature review and infographic under development 'Beginners Guide to Interprofessional Facilitation'
6. Professional Development: IPE webinars facilitated through the ANZAHPE network
7. IPE networking events
8. Advocacy: Provided expert advice on AHPRA's (Australian Health Practitioner Regulation Agency) proposed interprofessional collaborative practice statement of intent
9. Advocacy: provided feedback on the Australian Medical Council's new accreditation standards for medical schools
10. Working with NZ accreditation bodies to ensure students meet obligations for IPP set out in Health Practitioners Competence Act



*Interprofessional facilitation infographic based on 2010-2021 literature.*

## GLOBAL CONTRIBUTION

The AIPPEN network contributes to several Interprofessional Global working groups and Interprofessional Research Global (IPR.G). AIPPEN members have participated in & contributed to ATBH and other interprofessional conferences, Global Café activities, IPR.G and other publications, associate editorships and reviewing for JIC.

## CHALLENGES

- AIPPEN has no funding stream; the delivery of objectives and activities remain dependent on members' capacity
- Advocating for an AIPPEN presence in each Australian and New Zealand university and training institution
- Ensuring diverse representation on the leadership group across universities and practice

## PRIORITIES

1. Continue to advocate for IPE and collaborative practice across Australasia.
2. Contribute to the scope of practice review (for health professionals working in primary care in Australia)
3. Continue to mentor new colleagues.

## OBJECTIVES &amp; KEY RESULTS

OBJECTIVE	Key Result
Establishment of Community of Practice	<ol style="list-style-type: none"> <li>1. Meetings 3 monthly</li> <li>2. Communications with broader AIPPEN community 3-6 monthly</li> <li>3. Recruitment new members annually</li> </ol>
Share interprofessional resources	<ol style="list-style-type: none"> <li>1. Infographic completion end 2021</li> <li>2. AIPPEN resources updated to NEXUS annually</li> </ol>
Take charge of interprofessional activities with ANZAHPE	<ol style="list-style-type: none"> <li>1. Interprofessional Faculty Development delivered annually via ANZAHPE</li> </ol>
Link with international colleagues	<ol style="list-style-type: none"> <li>1. AIPPEN membership within Interprofessional Global Working Parties, which in turn is communicated back to wider AIPPEN group through email</li> </ol>

## FUTURE COLLABORATION

Contribution to symposia and continued participation in Interprofessional Global activities.

Expert speakers and facilitators for development, delivery and evaluation of activities.

Collaboration in research to explore IPE and practice in diverse global contexts.

## CONTACT

Website: [www.anzahpe.org/aippen](http://www.anzahpe.org/aippen)  
Email: [aippen@anzahpe.org](mailto:aippen@anzahpe.org)



## ANZAHPE IPE Resource Repository: 2023-24 Submission Form

Title of resource (maximum of 12 words)	
Type of resource (check relevant box)	<input type="checkbox"/> Peer reviewed journal article [provide <b>DOI link</b> to paper] <input type="checkbox"/> Conference paper [provide <b>website link</b> to paper if available online; upload abstract if not] <input type="checkbox"/> Report [provide as <b>PDF</b> ] <input type="checkbox"/> Guide/ Guidelines/ Procedures [provide as <b>PDF</b> ] <input type="checkbox"/> Faculty or Staff Development e.g. learning modules, presentations, podcast [provide as <b>PDF, sound file</b> ] <input type="checkbox"/> Student/Learner resources e.g. learning modules, presentations, podcast [provide as <b>PDF, sound file</b> ] <input type="checkbox"/> Other [provide as appropriate]
Contact details of the person submitting resource	Name: Institution: Email address:
Professions/Disciplines represented in the resource (please list)	
Target audience (check all that apply)	<input type="checkbox"/> Pre-registration students <input type="checkbox"/> Post-registration students <input type="checkbox"/> Practicing health professionals
Brief description of IPE resource (up to 150 words). This will be used to showcasing your resource on the website	
Context of the resource (check all that apply)	<input type="checkbox"/> Australia <input type="checkbox"/> New Zealand <input type="checkbox"/> Practicing health professionals
Keywords - maximum of five keywords	

Please submit the completed form, attaching the resource or website link as outlined above, to [executive@anzahpe.org](mailto:executive@anzahpe.org)